



### CLARKSVILLE MONTGOMERY CO. BIG TREE CONTEST

The Clarksville Tree Board invites the public to help locate big, old trees for Montgomery County's big tree inventory. **To nominate a potential winner, complete the form below as accurately as possible, using the instructions on the back. Please submit a photo and/or leaf sample to assist with the correct species identification.** Measurements do not have to be perfect; a Tree Board expert will verify nominated contenders.

**Entries should be postmarked by: 30 November, 2016**

The contest aims to involve the public in developing our large tree inventory while raising awareness of the benefits trees provide to our area. Trees reduce air and water pollution, shade and cool buildings and increase the beauty and livability of our community.

Species may include, but are not limited to:

|        |            |           |          |        |           |          |
|--------|------------|-----------|----------|--------|-----------|----------|
| Ash    | Chestnut   | Fir       | Holly    | Oak    | Persimmon | Spruce   |
| Beech  | Cottonwood | Gum       | Locust   | Osage  | Pine      | Sycamore |
| Cedar  | Dogwood    | Hackberry | Magnolia | Pawpaw | Poplar    | Walnut   |
| Cherry | Elm        | Hickory   | Maple    | Pecan  | Redbud    | ETC...   |

Send nomination form and photo or leaf sample to:

Clarksville Tree Board  
C/o City Forester  
102 Public Square  
Clarksville, TN 37040

---

### BIG TREE NOMINATION FORM

Species name: \_\_\_\_\_ Botanical name: \_\_\_\_\_

Tree Location: \_\_\_\_\_

Circumference at 4.5 ft. above ground level: \_\_\_\_\_ Crown width: \_\_\_\_\_ Height: \_\_\_\_\_

Nominated by: \_\_\_\_\_

Address: \_\_\_\_\_ Phone: \_\_\_\_\_

Tree Owner: \_\_\_\_\_

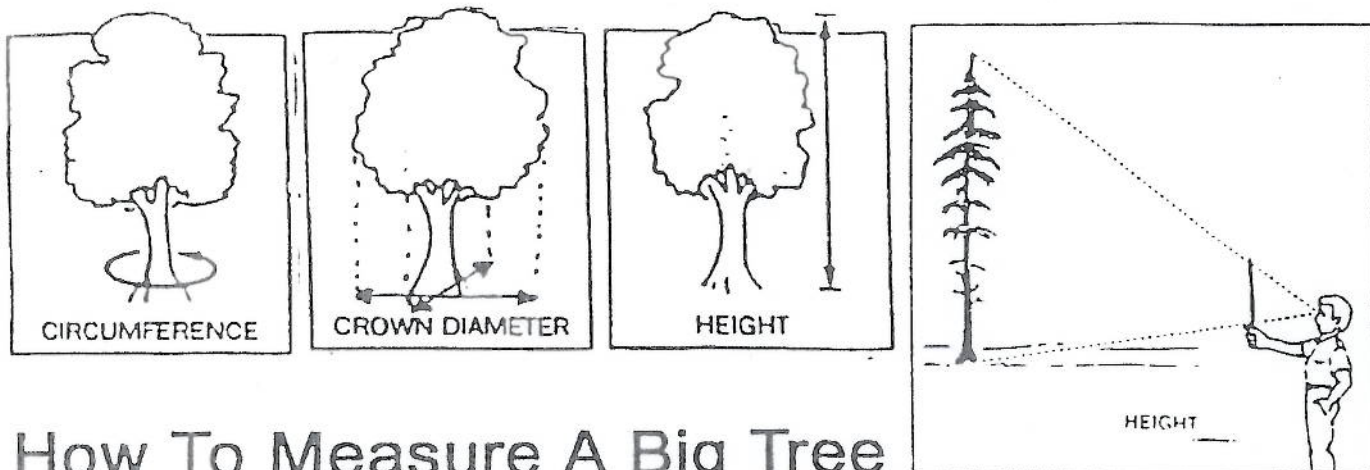
Address: \_\_\_\_\_ Phone: \_\_\_\_\_

---

DO NOT WRITE IN THE SECTION BELOW – TO BE COMPLETED BY TREE BOARD MEMBER

Verified by: \_\_\_\_\_ Date: \_\_\_\_\_

TOTAL POINTS: \_\_\_\_\_ [Circumference (inch) + .25 crown (feet) + height (feet) = Pts]



## How To Measure A Big Tree

To do a preliminary check for a champion-quality tree, you need a long piece of string, a tape measure, a stick as long as your arm, and four sticks for stakes.

### CIRCUMFERENCE:

1. Measure the circumference of the trunk at 4 1/2 feet above the ground on the uphill side of the tree, using the long string. Measure the string in inches.

### CROWN/BRANCH WIDTH:

1. Look for the widest part of the crown and mark the branch ends by placing two markers in the ground. Measure between the markers.
2. Find the narrowest part of the crown and mark the ends of its branches.
3. Measure the two distances between the two pairs of stakes. Add the two distances and divide by two to get the average width of the crown.

### HEIGHT:

1. With your arm extended, hold a stick upright in one hand, directly in front of your face. Have someone measure the distance from the bridge of your nose (between the eyes) to the stick. Hold the stick so that the length of the stick from the top of your hand to its top end is equal to the distance from your eyes to the top of your hand.
2. Holding the stick straight up and down at arm's length, walk toward or away from the tree so that with head held still, arm is level with the ground, the bottom of the tree lines up with the top part of your hand holding the stick, and the top of the tree lines up with the top of the stick (see diagram above). Hold the head and arm still, and move your eyes only to line up the tree.
3. The distance you are standing away from the tree is the approximate height of the tree.